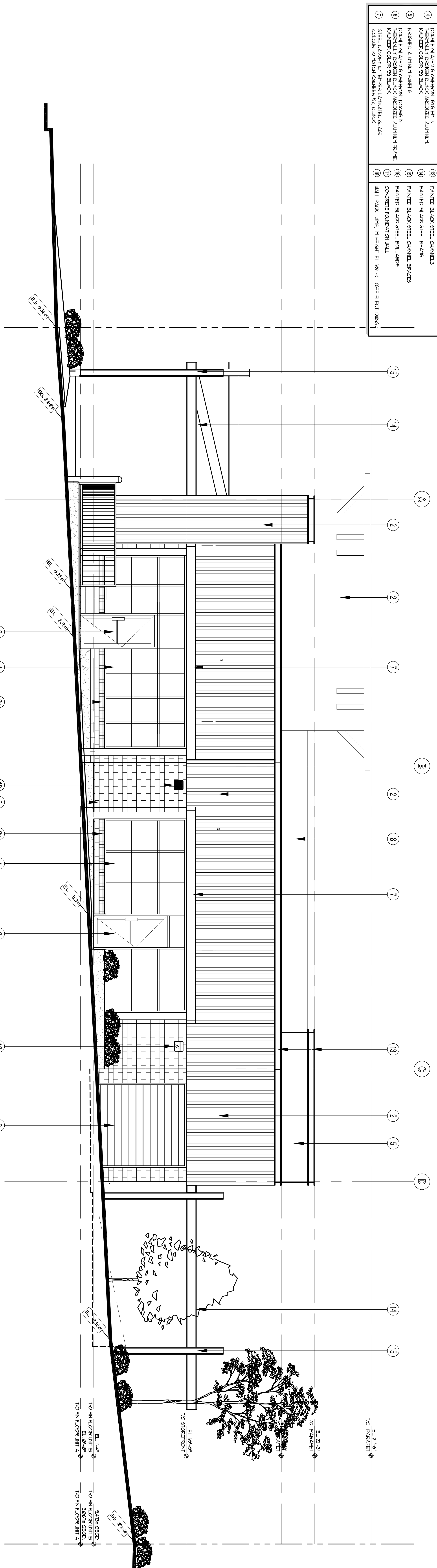


**SOUTH ELEVATION**

SCALE: 1/4" = 1'-0"

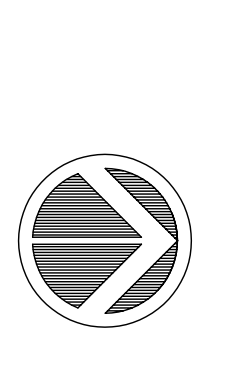
EXTERIOR FINISHES	
1	GALVALUME METAL ROOF
2	GALVALUME METAL CLADDING
3	MURAL, GASTEL, GREY BRICK VENEER
4	3/16" X 1/2" X 2" BRICK VENEER (BLACK BUILDING)
5	3/16" X 1/2" X 2" BRICK VENEER (BLACK BUILDING)
6	MURAL, RESONCO GREY BRICK VENEER
7	3/16" X 1/2" X 2" BRICK VENEER (BLACK BUILDING)
8	DOUBLE GLAZED STONEWALL SYSTEM IN THERMAL BREAKER BLACK ANODIZED ALUMINIUM TRUSSELS COLOR TO BLACK
9	BROKEN ALUMINIUM PANELS
10	THERMAL BREAKER SYSTEM IN THERMAL BREAKER BLACK ANODIZED ALUMINIUM TRUSSELS COLOR TO BLACK
11	STEEL CANOPY BY THERMAL ANKINTEP GLASS SYSTEM IN THERMAL BREAKER BLACK ANODIZED ALUMINIUM TRUSSELS COLOR TO BLACK
12	METAL CLADDING (BACKSIDE OF PARAPET)
13	METAL CLADDING (BACKSIDE OF PARAPET)
14	CONCRETE FOUNDATION WALL
15	PAINTED BLACK STEEL BOLTS
16	PAINTED BLACK STEEL BOLTS
17	PAINTED BLACK STEEL BOLTS
18	PAINTED BLACK STEEL BOLTS
19	PAINTED BLACK STEEL BOLTS
20	PAINTED BLACK STEEL BOLTS
21	PAINTED BLACK STEEL BOLTS
22	PAINTED BLACK STEEL BOLTS
23	PAINTED BLACK STEEL BOLTS
24	PAINTED BLACK STEEL BOLTS
25	PAINTED BLACK STEEL BOLTS
26	PAINTED BLACK STEEL BOLTS
27	PAINTED BLACK STEEL BOLTS
28	PAINTED BLACK STEEL BOLTS
29	PAINTED BLACK STEEL BOLTS
30	PAINTED BLACK STEEL BOLTS
31	PAINTED BLACK STEEL BOLTS
32	PAINTED BLACK STEEL BOLTS
33	PAINTED BLACK STEEL BOLTS
34	PAINTED BLACK STEEL BOLTS
35	PAINTED BLACK STEEL BOLTS
36	PAINTED BLACK STEEL BOLTS
37	PAINTED BLACK STEEL BOLTS
38	PAINTED BLACK STEEL BOLTS
39	PAINTED BLACK STEEL BOLTS
40	PAINTED BLACK STEEL BOLTS
41	PAINTED BLACK STEEL BOLTS
42	PAINTED BLACK STEEL BOLTS
43	PAINTED BLACK STEEL BOLTS
44	PAINTED BLACK STEEL BOLTS
45	PAINTED BLACK STEEL BOLTS
46	PAINTED BLACK STEEL BOLTS
47	PAINTED BLACK STEEL BOLTS
48	PAINTED BLACK STEEL BOLTS
49	PAINTED BLACK STEEL BOLTS
50	PAINTED BLACK STEEL BOLTS
51	PAINTED BLACK STEEL BOLTS
52	PAINTED BLACK STEEL BOLTS
53	PAINTED BLACK STEEL BOLTS
54	PAINTED BLACK STEEL BOLTS
55	PAINTED BLACK STEEL BOLTS
56	PAINTED BLACK STEEL BOLTS
57	PAINTED BLACK STEEL BOLTS
58	PAINTED BLACK STEEL BOLTS
59	PAINTED BLACK STEEL BOLTS
60	PAINTED BLACK STEEL BOLTS



**WEST ELEVATION**

SCALE: 1/4" = 1'-0"

NO.	DESCRIPTION	DATE
1	REVISION	
2	REVISION	
3	REVISION	
4	REVISION	
5	REVISION	
6	REVISION	
7	REVISION	
8	REVISION	
9	REVISION	
10	REVISION	
11	REVISION	
12	REVISION	
13	REVISION	
14	REVISION	
15	REVISION	
16	REVISION	
17	REVISION	
18	REVISION	
19	REVISION	
20	REVISION	
21	REVISION	
22	REVISION	
23	REVISION	
24	REVISION	
25	REVISION	
26	REVISION	
27	REVISION	
28	REVISION	
29	REVISION	
30	REVISION	



The drawings, as an instrument of service, are the property of Design Group Architects Ltd. and may not be reproduced, copied or used in any way without the written consent of Design Group Architects Ltd. All designs, concepts and other information contained herein are for use on this project only and shall not be used for any other project without the written consent of Design Group Architects Ltd.

**COMMERCIAL DEVELOPMENT**  
for **PCI DEVELOPMENTS CORP.**  
850 & 858 POWELL STREET, VANCOUVER, B.C.

**Design Group Architects Ltd.**  
600-1140 WEST PENNIX  
VANCOUVER, B.C. V6E 4G3  
TELEPHONE (604) 687-2324  
FACSIMILE (604) 686-7481

**architects ltd**

DATE: AUG / 03  
SCALE: AS SHOWN  
DRAWN: RB  
CHECKED: RB

**South & West ELEVATIONS**

**2145**

**A-3.1**